

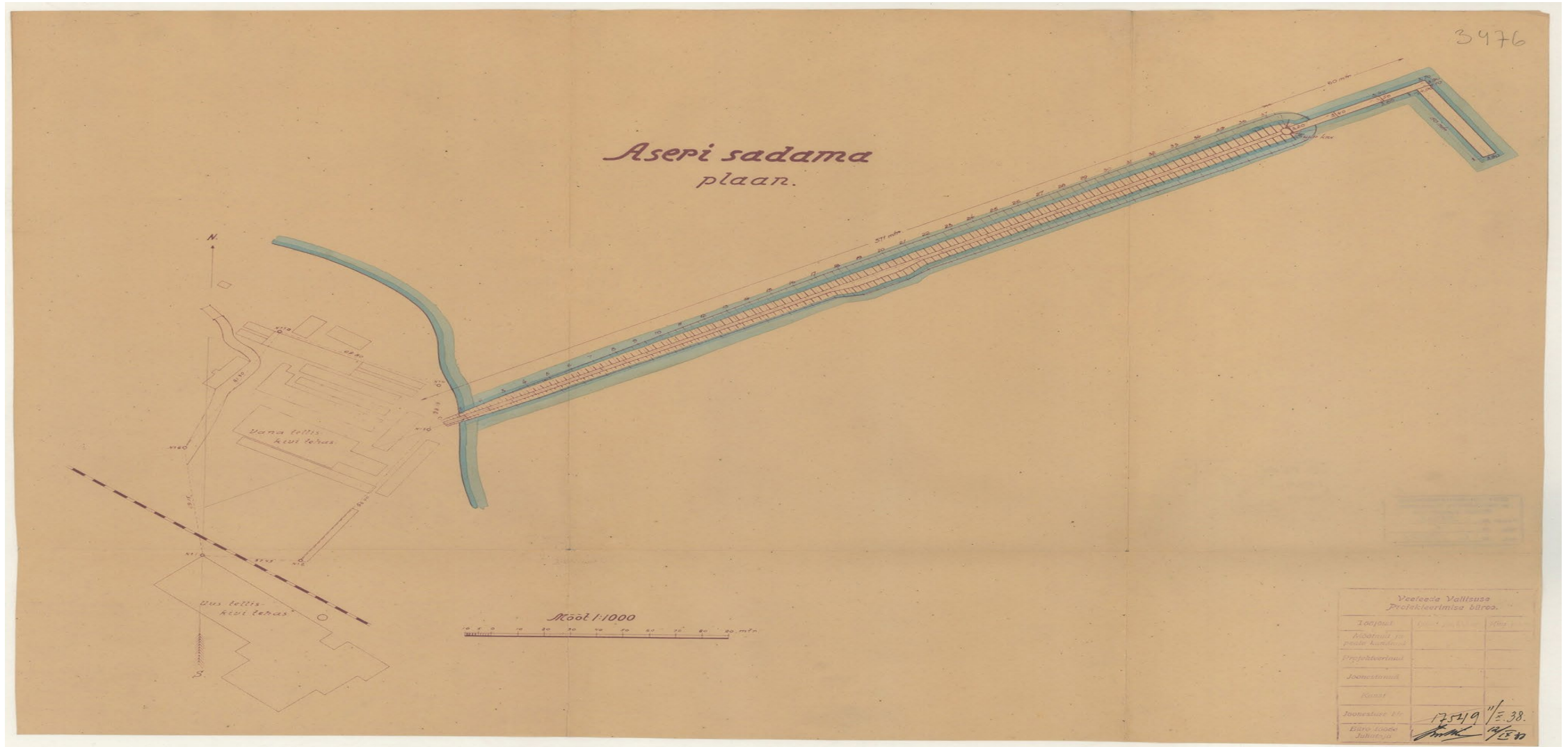
An aerial photograph of terraced rice fields in a valley. The terraces are filled with green rice plants, and a small wooden house with a blue roof is visible on one of the terraces. The background shows a dense forest and a valley floor.

# Aseri Port and Industrial Park

[www.aserisadam.ee](http://www.aserisadam.ee)

[www.portofaseri.com](http://www.portofaseri.com)

# Port of Aseri the plan 1938.a



# Port of Aseri old harbour pier 1998 year



# Port of Aseri sea view 1999.year



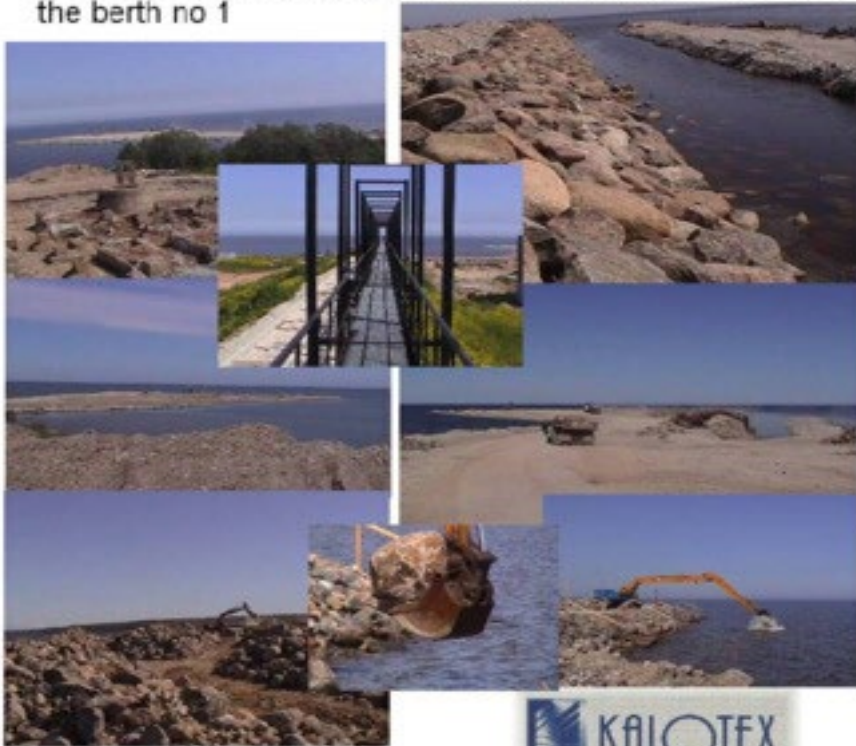
# Port of Aseri old harbour pier 2000.year



# Port of Aseri start new construction 2001 year

## Aseri Harbor

the Construction status as June 28, 2001 in the middle the railcar discharging bridge for light petrochemical products the berth and wave braker stones are placed about 50% of the berth no 1



# Port of Aseri Construction 2001



# Port of Aseri Construction 2001





# construction 2001



year



# Port of Aseri construction was stopped 2003



# Port of Aseri continuing development 2020



# Republic of Estonia property 70 000m<sup>2</sup>

MapSection1823061168963626203.png (PNG pilt, 1225 x 750 piksliit) - Skaleeritud (99%)

<https://xgis.maaamet.ee/maps/pump/MapSection1823061168963626203.png>



# Port of Aseri property 140 000 m<sup>2</sup>

MapSection103732857885499143.png (PNG pilt, 1225 × 750 pikslit) - Skaleeritud (99%)

<https://xgis.maaamet.ee/maps/pump/MapSection103732857885499143.png>



# Aseri Industrial park property 70 000m<sup>2</sup>

MapSection5160582349653681119.png (PNG pilt, 1225 × 750 pikslit) - Skaleeritud (99%)

<https://xgis.maaamet.ee/maps/pump/MapSection5160582349653681119.png>



# N.R Energy property

MapSection534855234024345627.png (PNG pilt, 1225 × 750 pikslit) - Skaleeritud (99%)

<https://xgis.maaamet.ee/maps/pump/MapSection534855234024345627.png>





# Viru-Nigula municipality

## Mere street

MapSection2820165947628591165.png (PNG pilt, 1225 × 750 pikslit) - Skaleeritud (99%)

<https://xgis.maaamet.ee/maps/pump/MapSection2820165947628591165.png>



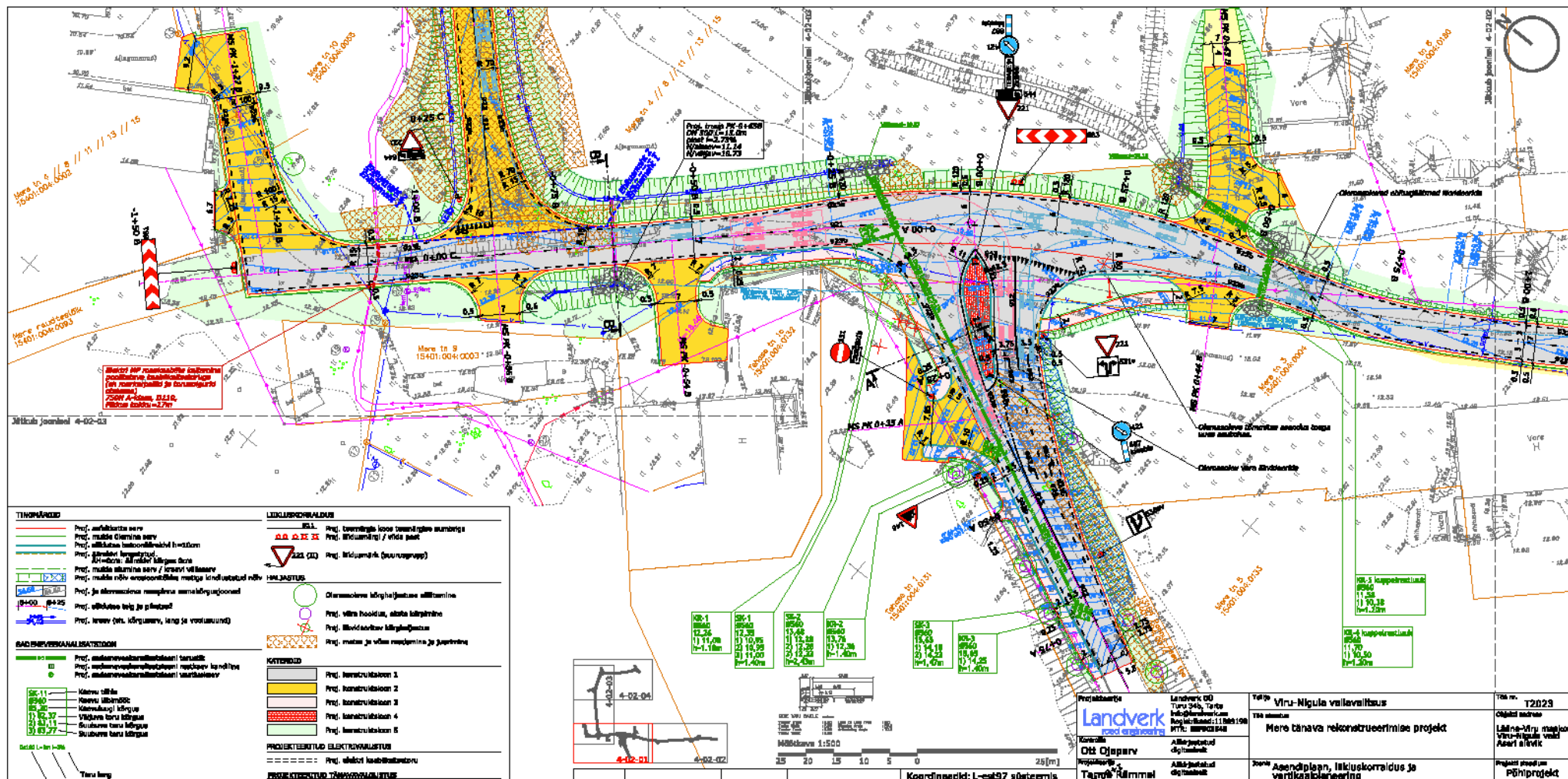
# Aseri industrial park new plan

MapSection5854441822781973034.png (PNG pilt, 1236 × 750 pikslit)

<https://xgis.maaamet.ee/maps/pump/MapSection5854441822781973034.png>



# Mere street acces road renovation project



TÄHTSUS	
[Symbol]	Prof. asfaltbetonis serv
[Symbol]	Prof. mullas diimimis serv
[Symbol]	Prof. asfaltbetonis betooni serv
[Symbol]	Prof. asfaltbetonis betooni serv
[Symbol]	Prof. mullas diimimis serv / servid välisav
[Symbol]	Prof. mullas diimimis serv / servid välisav
[Symbol]	Prof. ja asfaltbetonis servid servid välisav
[Symbol]	Prof. välisav ja ja püstis
[Symbol]	Prof. servid (sh. kõrgus, lang ja vooluavald)

LÜLITÄHTSUS	
[Symbol]	Prof. tänavatähe loomise tähtsuse
[Symbol]	Prof. tänavatähe / vntu post
[Symbol]	Prof. tänavatähe (servigrupp)

KATETÜÜP	
[Symbol]	Prof. katekatsioon 1
[Symbol]	Prof. katekatsioon 2
[Symbol]	Prof. katekatsioon 3
[Symbol]	Prof. katekatsioon 4
[Symbol]	Prof. katekatsioon 5

PROJEKTITÜÜP	
[Symbol]	Prof. elektrivõrgu
[Symbol]	Prof. vee- ja gaasivõrgu

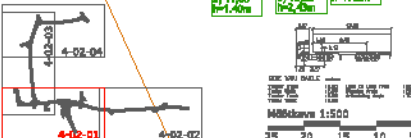
MATERIAALID	
[Symbol]	Prof. asfaltbetonis serv
[Symbol]	Prof. mullas diimimis serv
[Symbol]	Prof. asfaltbetonis betooni serv
[Symbol]	Prof. asfaltbetonis betooni serv
[Symbol]	Prof. mullas diimimis serv / servid välisav
[Symbol]	Prof. mullas diimimis serv / servid välisav
[Symbol]	Prof. ja asfaltbetonis servid servid välisav
[Symbol]	Prof. välisav ja ja püstis
[Symbol]	Prof. servid (sh. kõrgus, lang ja vooluavald)

KATERITÜÜP	
[Symbol]	Prof. katekatsioon 1
[Symbol]	Prof. katekatsioon 2
[Symbol]	Prof. katekatsioon 3
[Symbol]	Prof. katekatsioon 4
[Symbol]	Prof. katekatsioon 5

PROJEKTITÜÜP	
[Symbol]	Prof. elektrivõrgu
[Symbol]	Prof. vee- ja gaasivõrgu

**Landverk**  
 Töökoht: Viru-Nigula valla vald  
 Tänav: Mere tänav  
 Projekt: Mere tänav rekonstrueerimise projekt  
 Autor: Olli Ojaperv  
 Kesk: Olli Ojaperv  
 Date: 4-02-04

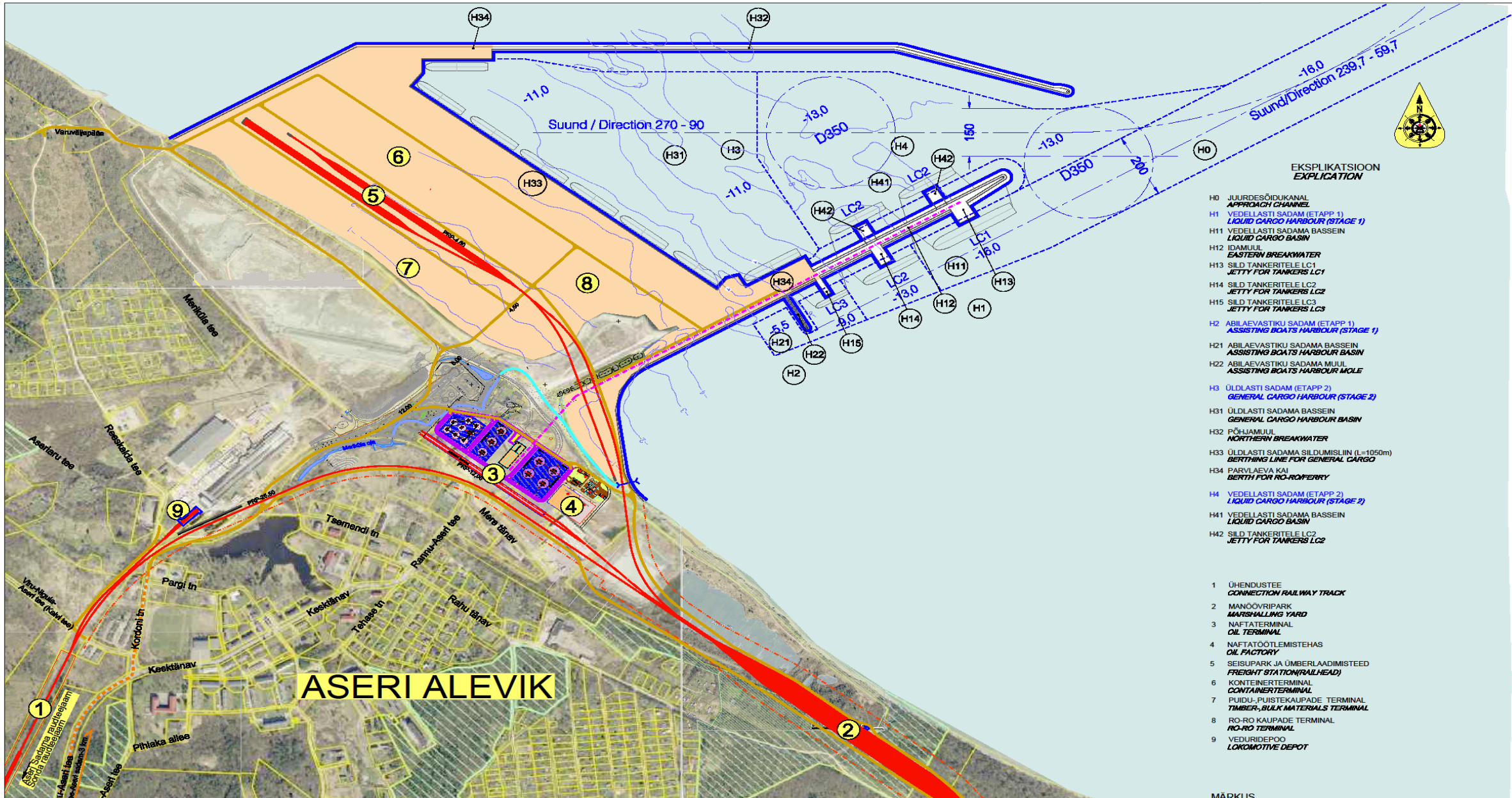
**Viru-Nigula valla vald**  
 Tänav: Mere tänav  
 Projekt: Mere tänav rekonstrueerimise projekt  
 Autor: Olli Ojaperv  
 Kesk: Olli Ojaperv  
 Date: 4-02-04



# Port of Aseri water sea



# Port of Aseri Masterplan



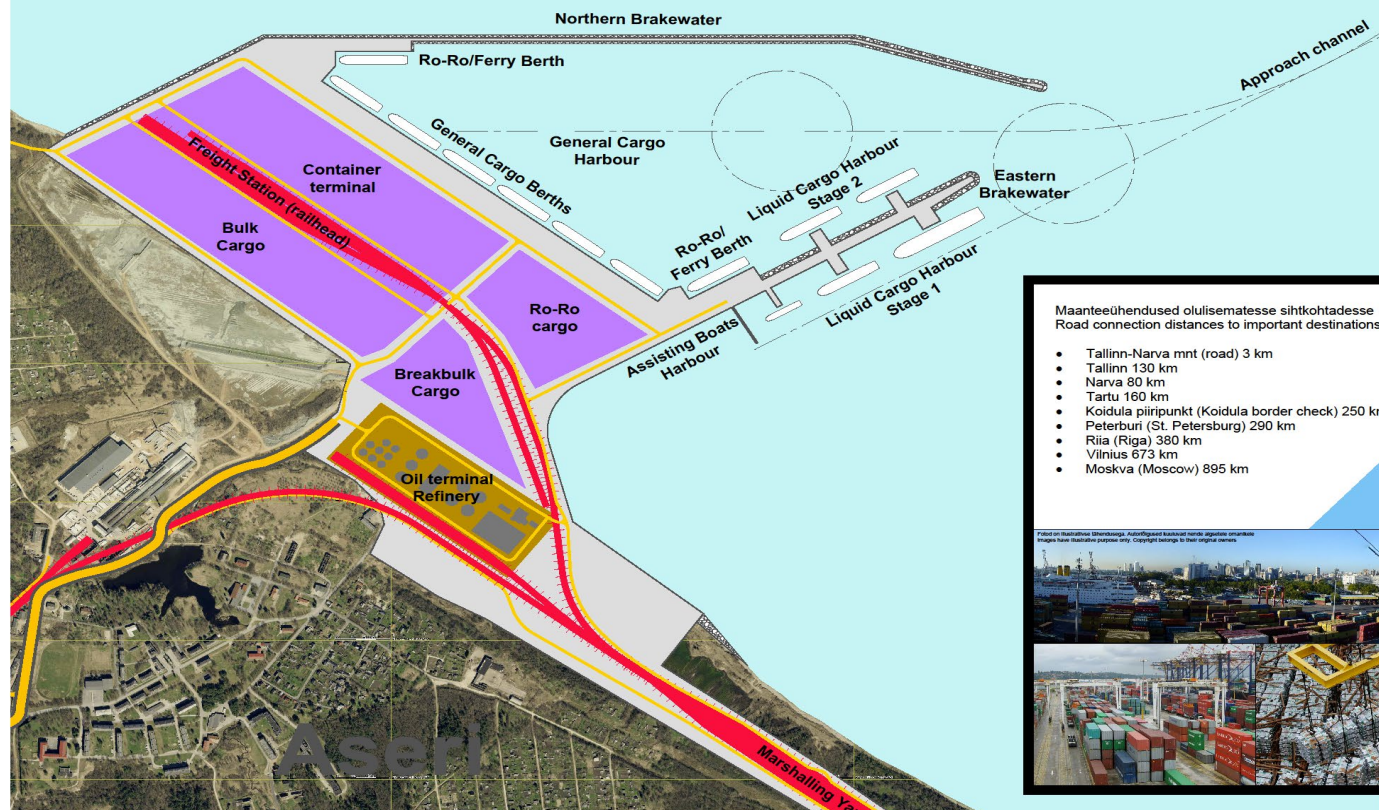
**EKSPLIKATSIOON  
EXPLICATION**

- H0 JUURDESÕIDUKANAL  
APPROACH CHANNEL
- H1 VEDELLASTI SADAM (ETAPP 1)  
LIQUID CARGO HARBOUR (STAGE 1)
- H11 VEDELLASTI SADAMA BASSEIN  
LIQUID CARGO BASIN
- H12 IDAMUUL  
EASTERN BREAKWATER
- H13 SILD TANKERITELE LC1  
JETTY FOR TANKERS LC1
- H14 SILD TANKERITELE LC2  
JETTY FOR TANKERS LC2
- H15 SILD TANKERITELE LC3  
JETTY FOR TANKERS LC3
- H2 ABILAEVASTIKU SADAM (ETAPP 1)  
ASSISTING BOATS HARBOUR (STAGE 1)
- H21 ABILAEVASTIKU SADAMA BASSEIN  
ASSISTING BOATS HARBOUR BASIN
- H22 ABILAEVASTIKU SADAMA MUUL  
ASSISTING BOATS HARBOUR MOLE
- H3 ÜLDLASTI SADAM (ETAPP 2)  
GENERAL CARGO HARBOUR (STAGE 2)
- H31 ÜLDLASTI SADAMA BASSEIN  
GENERAL CARGO HARBOUR BASIN
- H32 PÕHJAMUUL  
NORTHERN BREAKWATER
- H33 ÜLDLASTI SADAMA SILDUMISLIIN (L=1050m)  
BERTHING LINE FOR GENERAL CARGO
- H34 PARVLAEVA KAI  
BERTH FOR RO-RO/FERRY
- H4 VEDELLASTI SADAM (ETAPP 2)  
LIQUID CARGO HARBOUR (STAGE 2)
- H41 VEDELLASTI SADAMA BASSEIN  
LIQUID CARGO BASIN
- H42 SILD TANKERITELE LC2  
JETTY FOR TANKERS LC2
  
- 1 ÜHENDUSTEE  
CONNECTION RAILWAY TRACK
- 2 MANOÖVRIPARK  
MARSHALLINGS YARD
- 3 NAFTATERMINAL  
OIL TERMINAL
- 4 NAFTATÖÖLEMISTEHAS  
OIL FACTORY
- 5 SEISUPARK JA ÜMBERLAADIMISTEHAUS  
FREIGHT STATION (RAILHEAD)
- 6 KONTEINERTERMINAL  
CONTAINER TERMINAL
- 7 PUIDU-, PUISTEKAUPEDE TERMINAL  
TIMBER-, BULK MATERIALS TERMINAL
- 8 RO-RO KAUPADE TERMINAL  
RO-RO TERMINAL
- 9 VEDURIDEPÕO  
LOCOMOTIVE DEPOT

**ASERI ALEVİK**

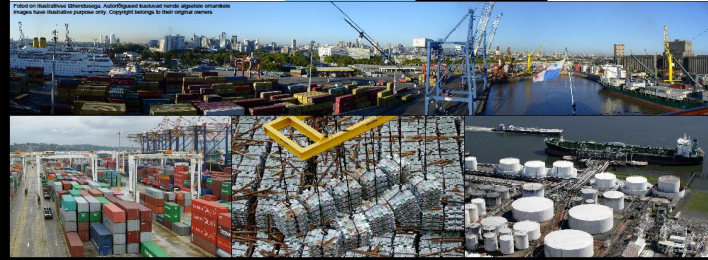
MÄRKUS

# Port of Aseri location and access road

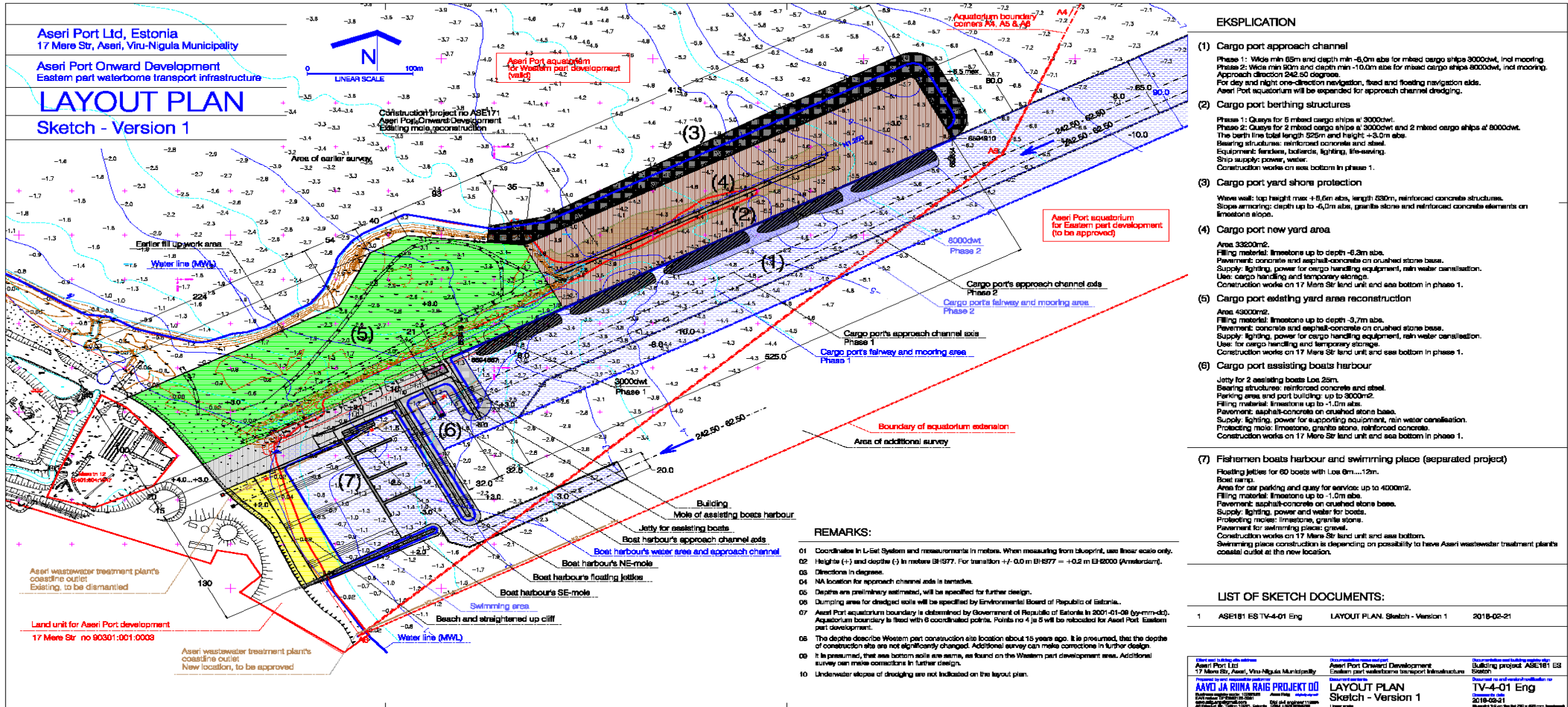


Maanteeühendused olulisematesse sihtkohtadesse  
Road connection distances to important destinations:

- Tallinn-Narva mnt (road) 3 km
- Tallinn 130 km
- Narva 80 km
- Tartu 160 km
- Koidula piiripunkt (Koidula border check) 250 km
- Peterburi (St. Petersburg) 290 km
- Riia (Riga) 380 km
- Vilnius 673 km
- Moskva (Moscow) 895 km



# Port of Aseri first phase 300m first part



## EKSPLIKATION

- (1) Cargo port approach channel  
Phase 1: Wide min 65m and depth min -6,0m abs for mixed cargo ships 3000dwt, incl mooring.  
Phase 2: Wide min 90m and depth min -10,0m abs for mixed cargo ships 8000dwt, incl mooring.  
Approach direction 242.50 degrees.  
For day and night one-direction navigation, fixed and floating navigation aids.  
Aseri Port aquatorium will be expanded for approach channel dredging.
- (2) Cargo port berthing structures  
Phase 1: Quays for 5 mixed cargo ships at 3000dwt.  
Phase 2: Quays for 2 mixed cargo ships at 3000dwt and 2 mixed cargo ships at 8000dwt.  
The berth line total length 525m and height +3,0m abs.  
Berthing structures: reinforced concrete and steel.  
Equipment: fenders, bollards, lighting, life-saving.  
Ship supply: power, water.  
Construction works on sea bottom in phase 1.
- (3) Cargo port yard shore protection  
Wave wall: top height max +5,6m abs, length 530m, reinforced concrete structures.  
Slope armor: depth up to -6,0m abs, granite stone and reinforced concrete elements on limestone slope.
- (4) Cargo port new yard area  
Area: 33200m<sup>2</sup>.  
Filling material: limestone up to depth -6,3m abs.  
Pavement: concrete and asphalt-concrete on crushed stone base.  
Supply: lighting, power for cargo handling equipment, rain water canalisation.  
Use: cargo handling and temporary storage.  
Construction works on 17 Mere Str land unit and sea bottom in phase 1.
- (5) Cargo port existing yard area reconstruction  
Area: 43000m<sup>2</sup>.  
Filling material: limestone up to depth -3,7m abs.  
Pavement: concrete and asphalt-concrete on crushed stone base.  
Supply: lighting, power for supporting equipment, rain water canalisation.  
Use: for cargo handling and temporary storage.  
Construction works on 17 Mere Str land unit and sea bottom in phase 1.
- (6) Cargo port assisting boats harbour  
Jetty for 2 assisting boats Lxa 25m.  
Berthing structures: reinforced concrete and steel.  
Supply: lighting, power for cargo handling equipment, rain water canalisation.  
Use: for cargo handling and temporary storage.  
Construction works on 17 Mere Str land unit and sea bottom in phase 1.
- (7) Fishermen boats harbour and swimming place (separated project)  
Floating jetties for 60 boats with Lxa 6m...12m.  
Boat ramp.  
Area for car parking and quay for services up to 4000m<sup>2</sup>.  
Filling material: limestone up to -1,0m abs.  
Pavement: asphalt-concrete on crushed stone base.  
Supply: lighting, power and water for boats.  
Protecting moles: limestone, granite stone.  
Pavement for swimming place: gravel.  
Construction works on 17 Mere Str land unit and sea bottom.  
Swimming place construction is depending on possibility to have Aseri wastewater treatment plants coastal outlet at the new location.

## REMARKS:

- 01 Coordinates in UTM System and measurements in meters. When measuring from blueprint, use linear scale only.
- 02 Heights (+) and depths (-) in meters BH-977. For transition 47+0,0 m BH-977 = +0,2 m EI 2000 (Amsterdam).
- 03 Directions in degrees.
- 04 NA location for approach channel axis is tentative.
- 05 Depths are preliminary estimated, will be specified for further design.
- 06 Dumping area for dredged soils will be specified by Environmental Board of Republic of Estonia.
- 07 Aseri Port aquatorium boundary is determined by Government of Republic of Estonia in 2001-01-08 (yy-mm-dd). Aquatorium boundary to fixed with 6 coordinated points. Points no 4 ja 5 will be relocated for Aseri Port Eastern part development.
- 08 The depths describe Western part construction site location about 15 years ago. It is presumed, that the depth of construction site are not significantly changed. Additional survey can make corrections in further design.
- 09 It is presumed, that sea bottom soils are same, as found on the Western part development area. Additional survey can make corrections in further design.
- 10 Underwater slopes of dredging are not indicated on the layout plan.

## LIST OF SKETCH DOCUMENTS:

No	Document Name	Date
1	ASEI81 ESTV-4-01 Eng LAYOUT PLAN, Sketch - Version 1	2018-02-21

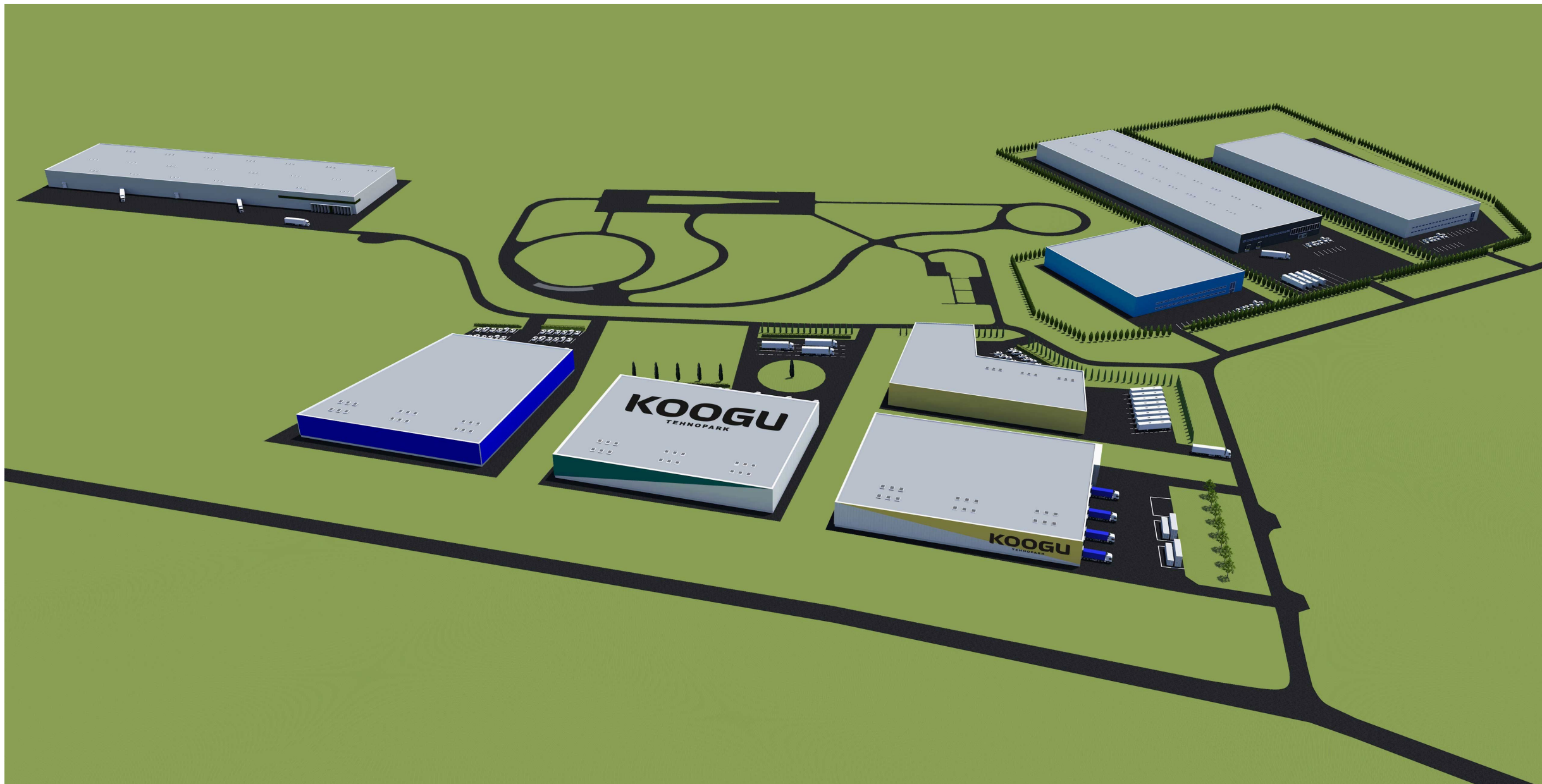
<p><b>Aseri Port Ltd</b> 17 Mere Str, Aseri, Viiru-Nigula Municipality</p> <p><b>Project for and owned by the partner:</b> <b>ANVO JA RUIVA RAIE PROJECT OÜ</b> Ruiva ja Anvo projektid, AS Aseri sadama arendamine ja ehitamine Ruiva ja Anvo projektid, AS</p>	<p><b>Designing and building project:</b> Aseri Port Onward Development Eastern part waterborne transport infrastructure</p> <p><b>Designing project:</b> ASEI81 ES Sketch</p> <p><b>Document no and version:</b> LAYOUT PLAN Sketch - Version 1</p>	<p><b>Designing and building project:</b> ASEI81 ES Sketch</p> <p><b>Document no and version:</b> TV-4-01 Eng 2018-02-21</p>
--	--	--

# The first phase control budget

THE FIRST PHASE OF CONSTRUCTION OF ASERI PORT				
NAME	amount	unit	price	TOTAL
<b>SEA DREDGING</b>				<b>8 010 000,00 €</b>
wharf access	180000	m <sup>3</sup>	17,00 €	3 060 000,00 €
entrance channel depth 16m	250000	m <sup>3</sup>	17,00 €	4 250 000,00 €
mobilisation	1	kmpl	700 000,00 €	700 000,00 €
<b>Wharf CONSTRUCTION p 300m and l- 35m</b>				<b>9 478 900,00 €</b>
anchored quay wall	300	jm	16 000,00 €	4 800 000,00 €
berth equipment	1	kmpl	370 000,00 €	370 000,00 €
the rear of the quay and movement area l-35m	10050	m <sup>2</sup>	360,00 €	3 618 000,00 €
tetrapods seaward slope protection behind the quay	705	pc	980,00 €	690 900,00 €
<b>OTHER WORKS</b>				<b>930 000,00 €</b>
Electrical work	1	kmpl	250 000,00 €	250 000,00 €
Water and sewage	1	kmpl	200 000,00 €	200 000,00 €
Admin building	10	pc	18 000,00 €	180 000,00 €
Other expenses	1	kmpl	300 000,00 €	300 000,00 €
<b>FIRST SERIES TOTAL</b>				<b>18 418 900,00 €</b>



# Koogu logistical park Tallinn-Narva road



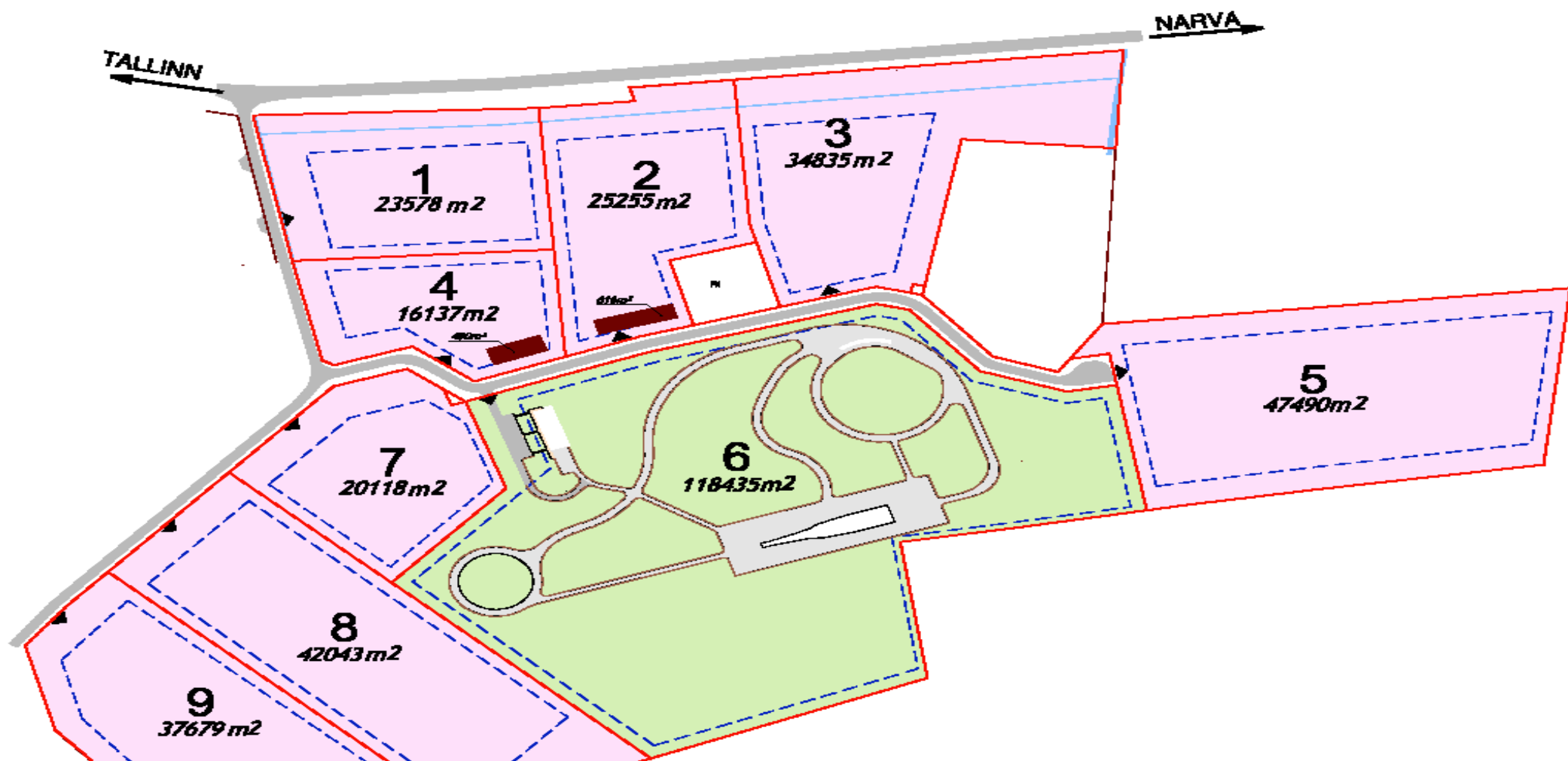
# Koosu industrialpark plan

01/02/2018

MapSection10105.png (1128x907)



# Koogu logistical park property



# Port of Aseri potential users

- As Wienerberger Export of bricks and import of white clay
- BioHemTec OÜ Estonian Protein Project grain in and out, protein production, hydrogen production
- Baltic Posphate FS Fertilizers
- GK Ehitus OÜ import of granite rubble from Finland
- Farmers' Grain Terminal
- Various bulk goods
- Logistics warehouses Koogu Industrial park
- Green Marine As recycling of construction and plastic waste